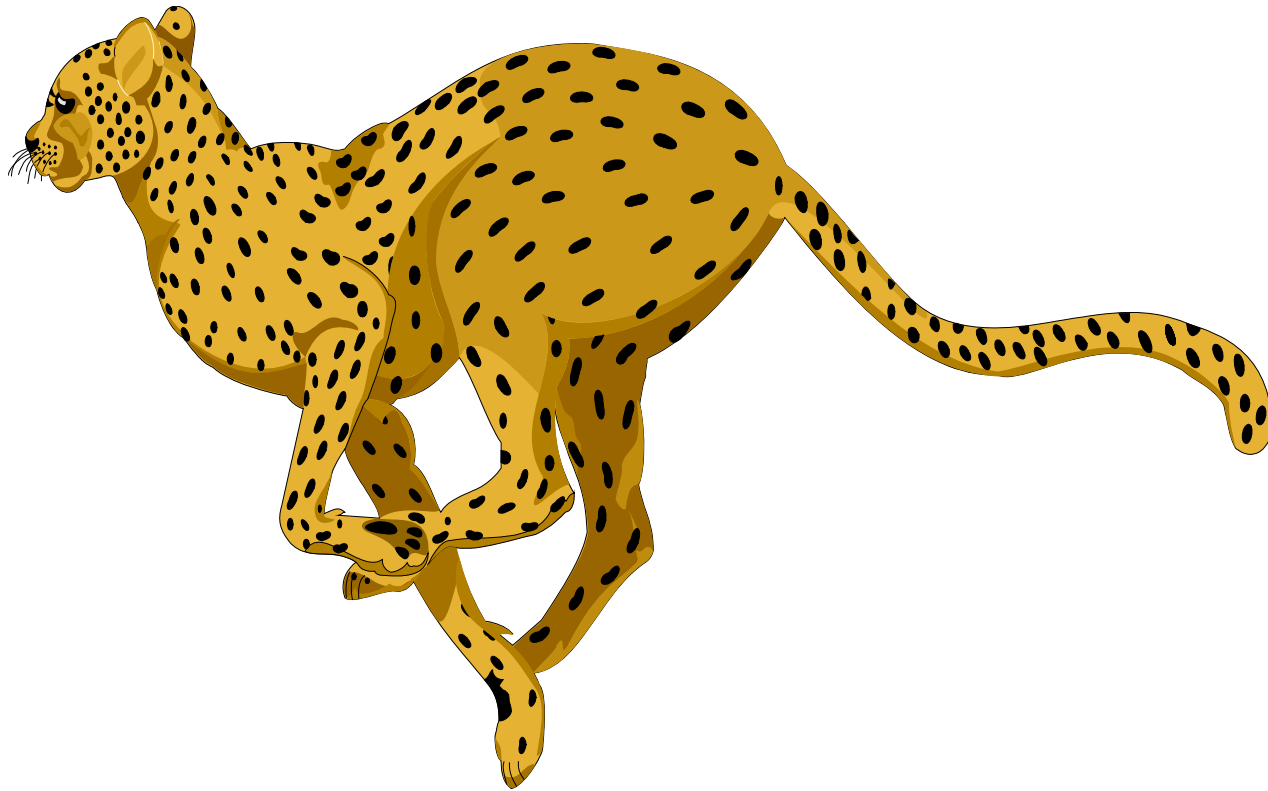


The “Jungle”

Lieutenants =
CHEETAH



- Loner; Feisty
- Singles out weaker animals for the occasional kill

The “Jungle”

Captains =
LIONS



- Hunts only in packs
- Can bring down a larger animal with coordination
- Easily slays the “Cheetah”

The “Jungle”

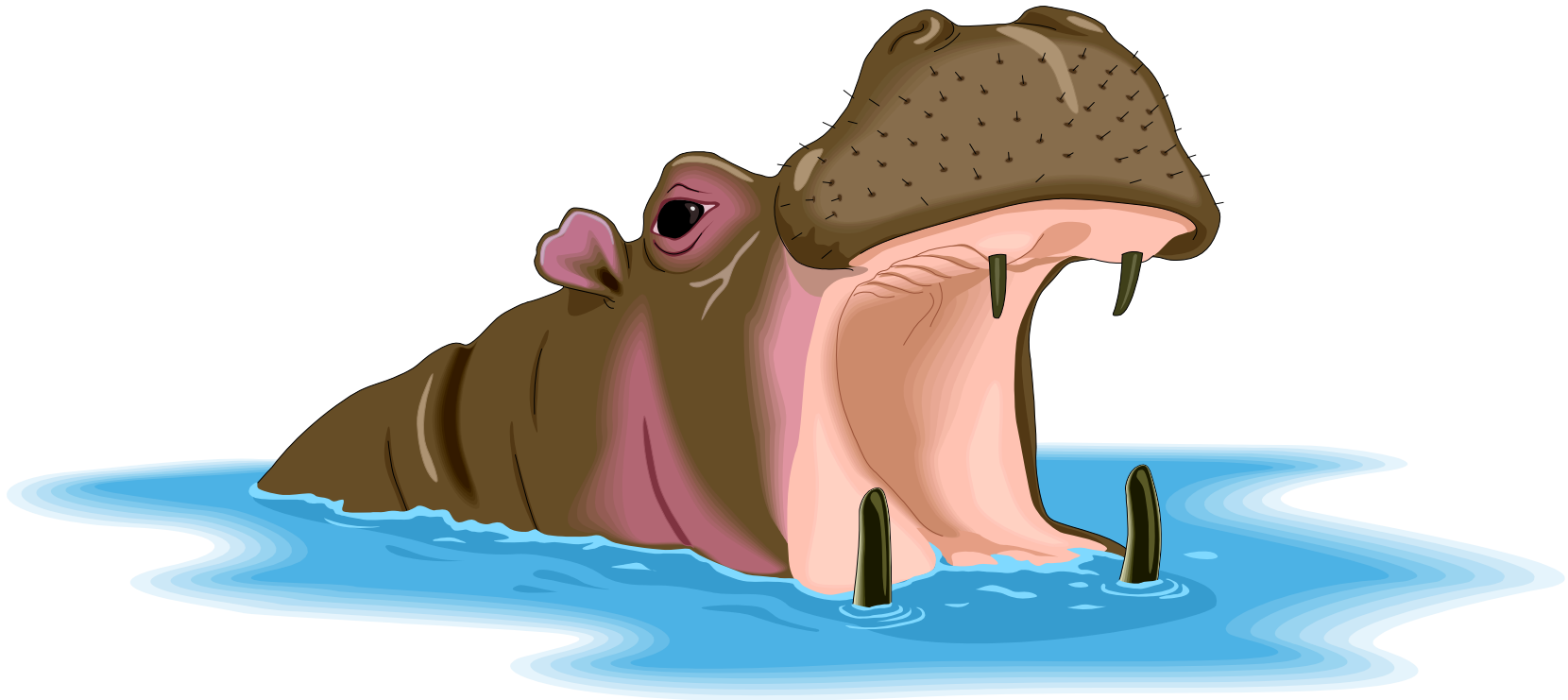
Majors =
WATER BUFFALO



- Aging, slower beast known for stubbornness
- Requires more than a single “Lion” or “Cheetah” to bring down

The “Jungle”

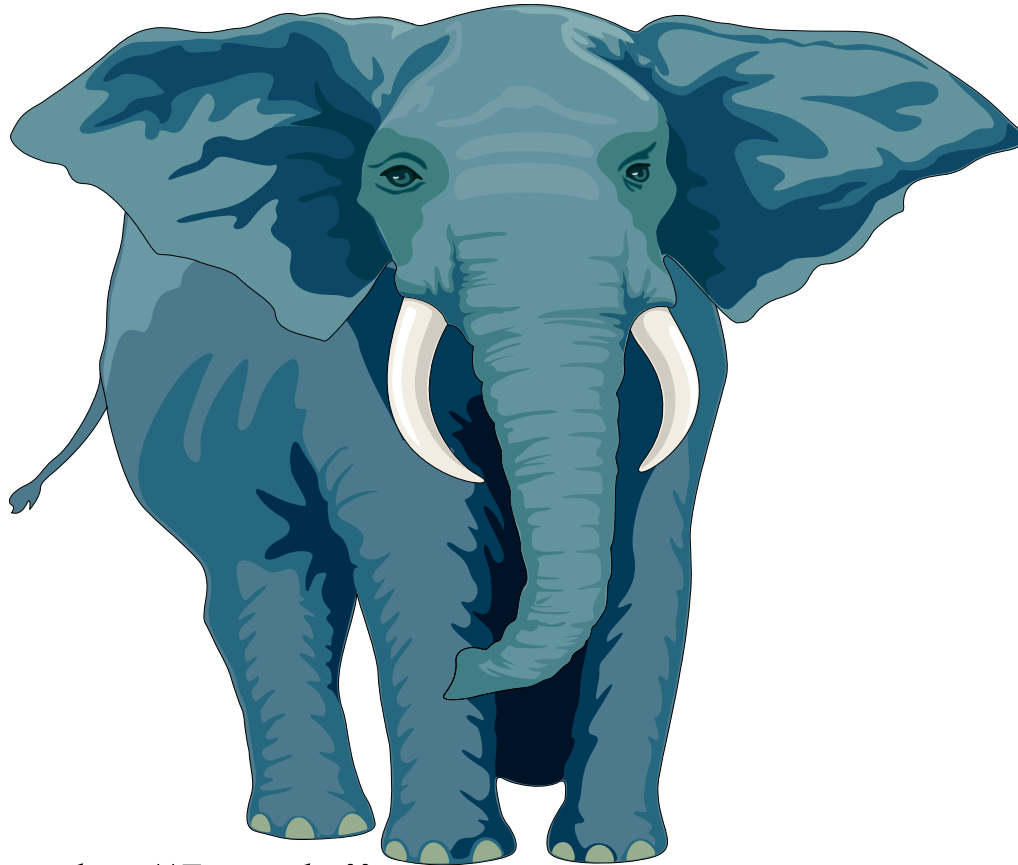
Lieutenant Colonels =
HIPPOPATOMUS



- Slow and cumbersome on land
- Safe in own environment
- Lays low to avoid enemies

The “Jungle”

Colonels =
ELEPHANTS



- Owns the “Jungle”
- Brought down only by acts of God or own wiles

The “Jungle”

NCOs =
HYENA



- Laughs continuously at the “Cheetah”
- Helps “Lions” complete the kill on larger animals

The “Jungle”

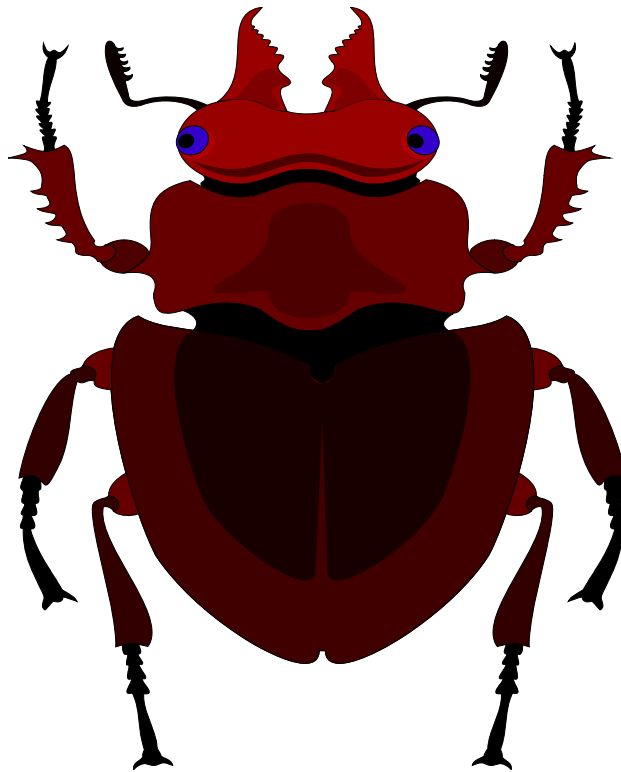
SMSGts and Chiefs =
SLOTHS



- Skilled in one area only
- Comes around only to feed, drink or take care of bodily functions

The “Jungle”

Airmen =
DUNG BEETLE



- Forced to deal with the “Crap” created by other animals