

US Special Operations Command



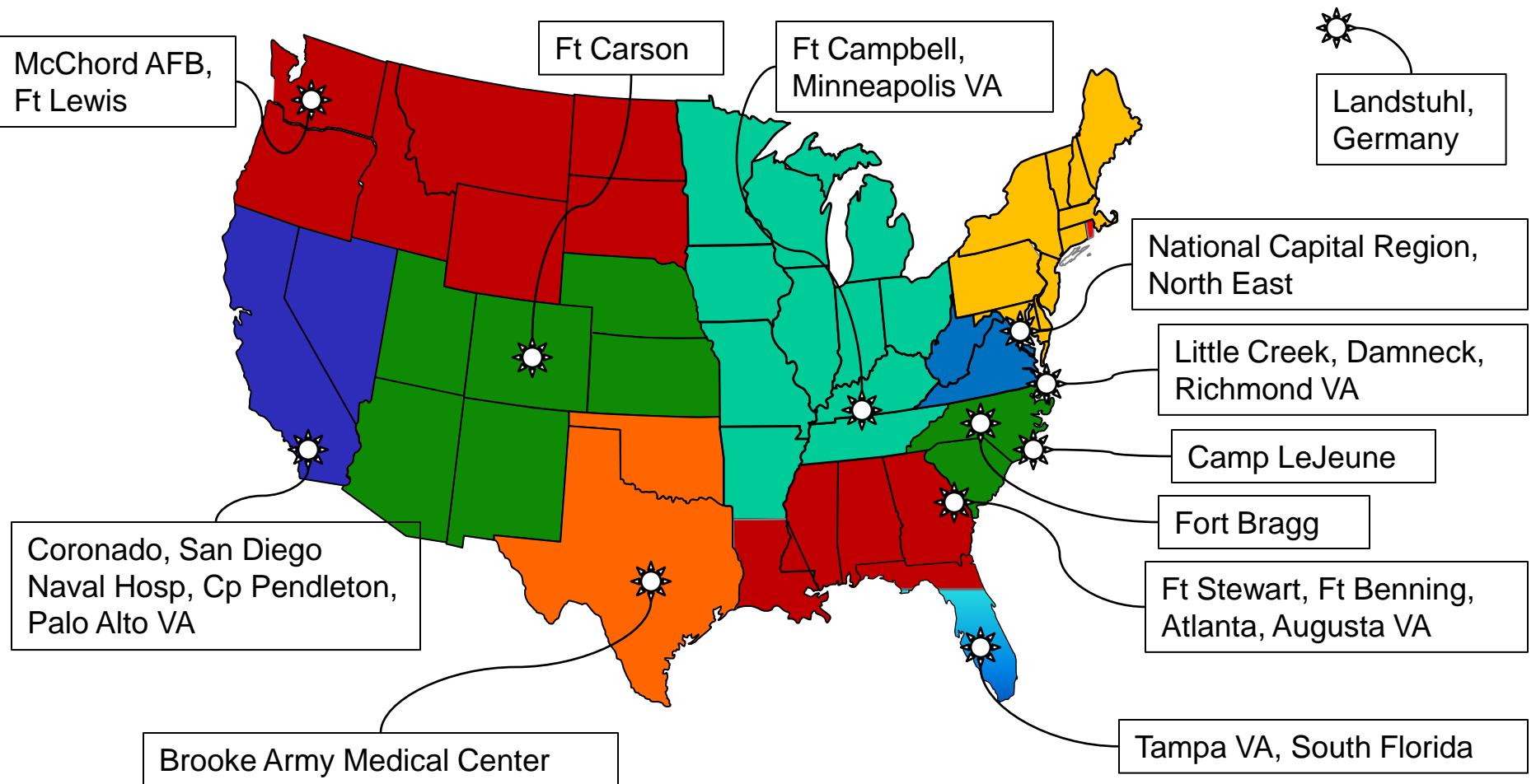
USSOCOM Care Coalition

**Briefer: Mr. Shawn Mello
Chief of Liaison Operations
USSOCOM Care Coalition
Date: 27 August, 2010**

The overall classification of this briefing is:
UNCLASSIFIED

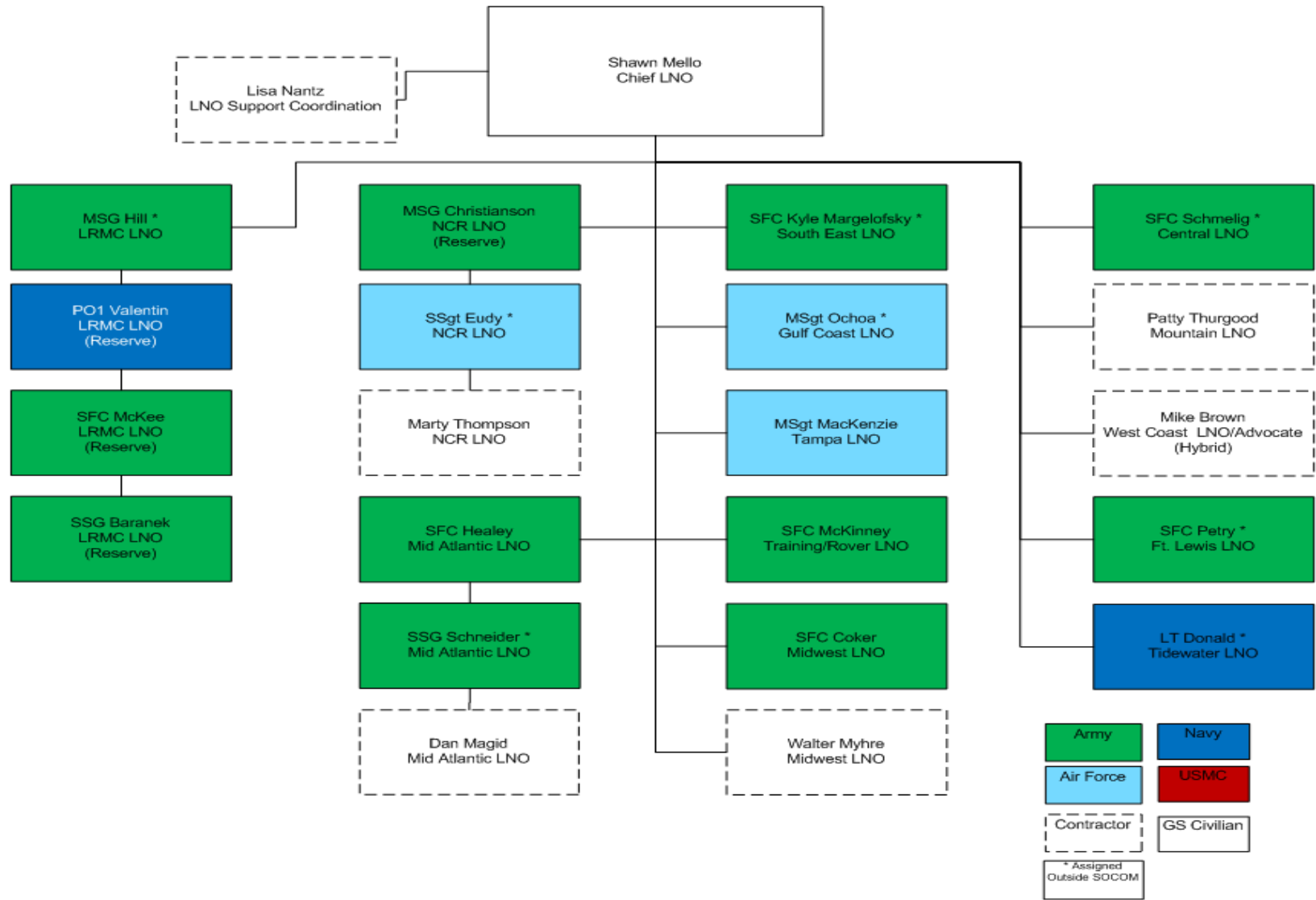


USSOCOM Care Coalition Liaison Operations Coverage





USSOCOM Care Coalition Liaison Operations



SOCS-FC



USSOCOM Care Coalition

- **Generally three categories of wounded, injured, or ill service members**
 - Wounded, injured, or ill service members (SM) evacuated using the theater MEDIVAC system
 - Wounded, injured, or ill SMs RTD and redeployed on schedule
 - Injured or ill SMs not in support of GWOT



USSOCOM Care Coalition

Liaison Operations, GWOT MEDEVAC

■ Incoming GWOT wounded SMs

- Care Coalition notified from the CJSOTF or other sources
- LRMC liaisons get ready to receive SM and possibly escorts
- Regional liaisons contact rear detachment of the SMs unit to ensure they are aware and to inform that we are tracking the SM also

■ Wounded SM arrival to LRMC

- Liaisons meet arriving SMs at the plane side or the entrance to the ER
- An accurate SM status and report is sent to all Care Coalition staff
- Open communication is established between LRMC Liaisons and the anticipated receiving facility liaison



USSOCOM Care Coalition

Liaison Operations, GWOT MEDEVAC (cont)

■ SM arrival to primary MTF

- Regional liaisons continually track SMs movement and continues to keep the unit and family informed of changes
- When possible liaisons meet the SMs at plane side or in the MTF ER
- Receiving liaison makes an assessment of SMs needs
- Liaison works with the unit to meet the SM and family needs
- Liaisons attempt to minimize confusion between SM, medical treatment team, unit and family



USSOCOM Care Coalition

Liaison Operations, GWOT MEDEVAC (cont)

■ Liaison follow on activities

- Liaisons make an assessment of the SMs recovery plan and if the criteria is met, recommends to the CCRP program
- Liaisons will report about SMs on daily, 72 hour, or weekly basis
- Liaisons attempt to maintain reasonable expectations of the SM and family
- When SMs no longer require extensive follow up, SM's are transferred to the Advocate section
 - When the SM no longer has acute needs the advocates or CCRP will take lead



USSOCOM Care Coalition Liaison Operations

■ **SMs injured or ill not in support of GWOT**

- This encompasses a wide variety of wounds and or illnesses received in the LOD
- Notification comes from many different means
 - OPREP 3
 - Unit notification
 - Word of mouth
- Same care and procedures are followed as GWOT injured SMs