

US Special Operations Command



Care Coalition Program Overview

The overall classification of this briefing is:

UNCLASSIFIED



USSOCOM Care Coalition Overview

■ Mission:

- Provide Special Operations Warriors And Their Families A **Model Advocacy Program** In Order To Enhance Their Quality Of Life And **Strengthen Special Operations Readiness.**
 - Support The **Entire** SOF Family – Everyone Qualifies
 - Wounded, Ill, or Injured And Their Family – Our Primary Focus
 - Active, Guard, Reserve, Retired, Separated
 - Family
 - Survivors
 - Advocacy **For Life**
 - **All Encompassing** – Pay, Benefits, VA, TRICARE, etc.
 - **Leverage Existing Programs** – Government or Non-Government
 - **Unite** SOF and Non-SOF Benevolent Organizations
 - Tenacious **Follow-up**
 - **Biased Toward Action**

Knowing What's Out There and What's Not – Getting Both



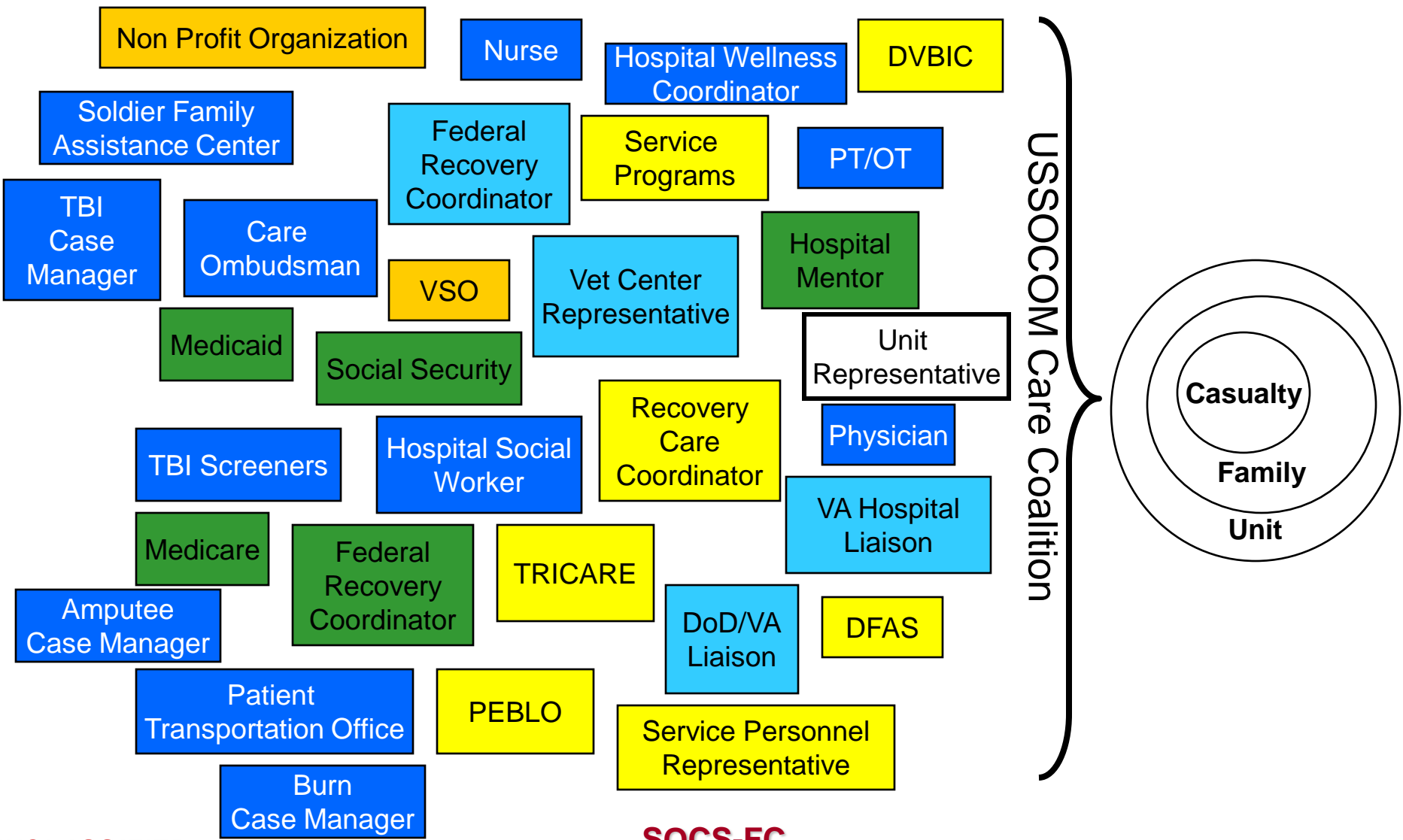
USSOCOM Care Coalition

■ Our Model

- Focus On The Mission. **Partnering With Units** - Return As Many Wounded, Ill, Or Injured To Duty As Quickly As Possible - **Operationally Fit And Mentally Prepared**
- **Family Security, Safety, And Well-Being** Are Critical To Mission Success
- Accomplish Mission **By-Through-With** Other Organizations (Government/Non-Government) To Ensure They Provide The Best Service To Our Forces

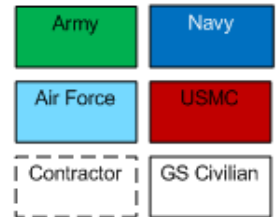
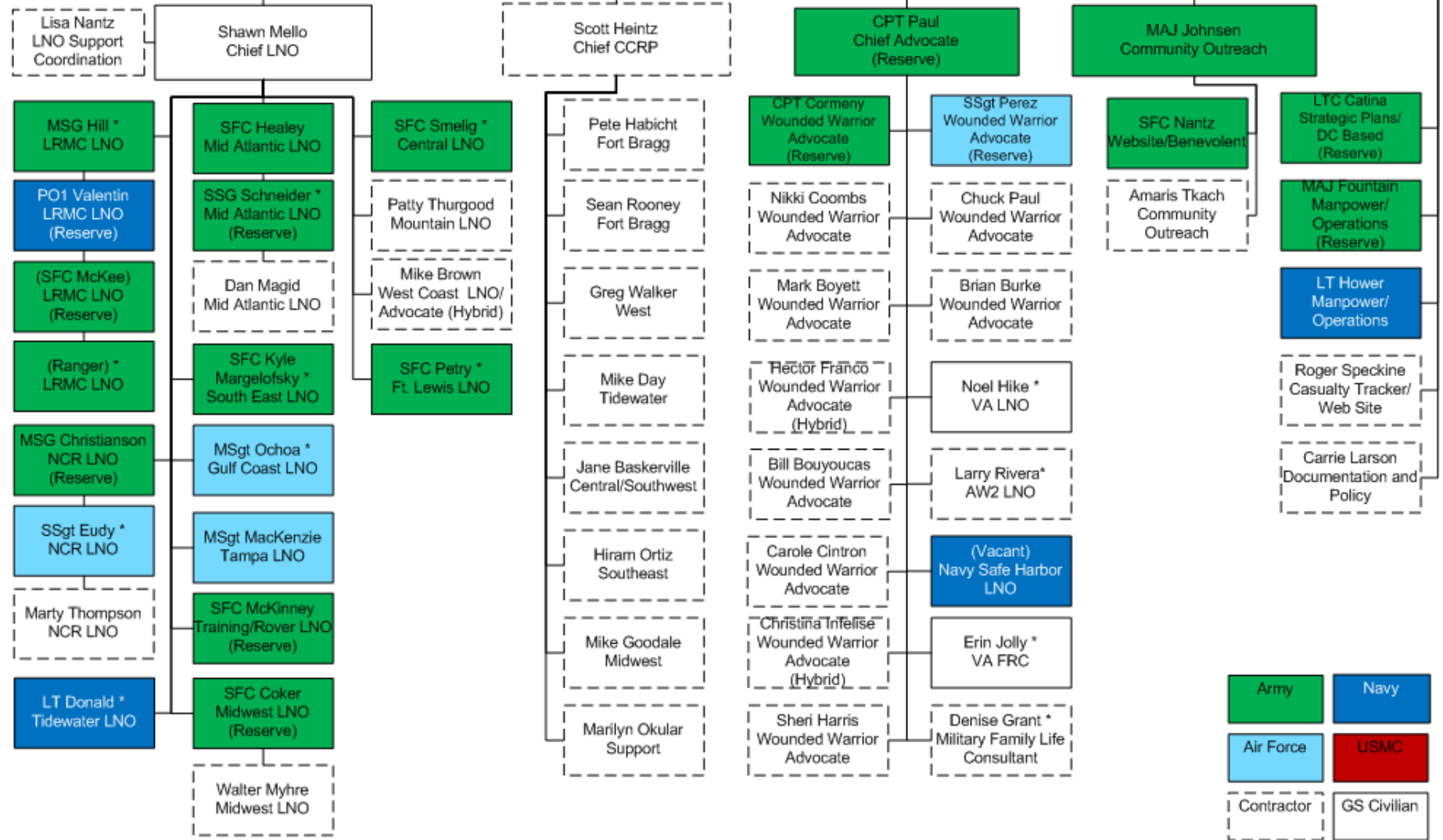


Overcoming Confusion Typical Wounded Warrior





UNCLASSIFIED



* Assigned Outside SOCOM

US Special Operations Command

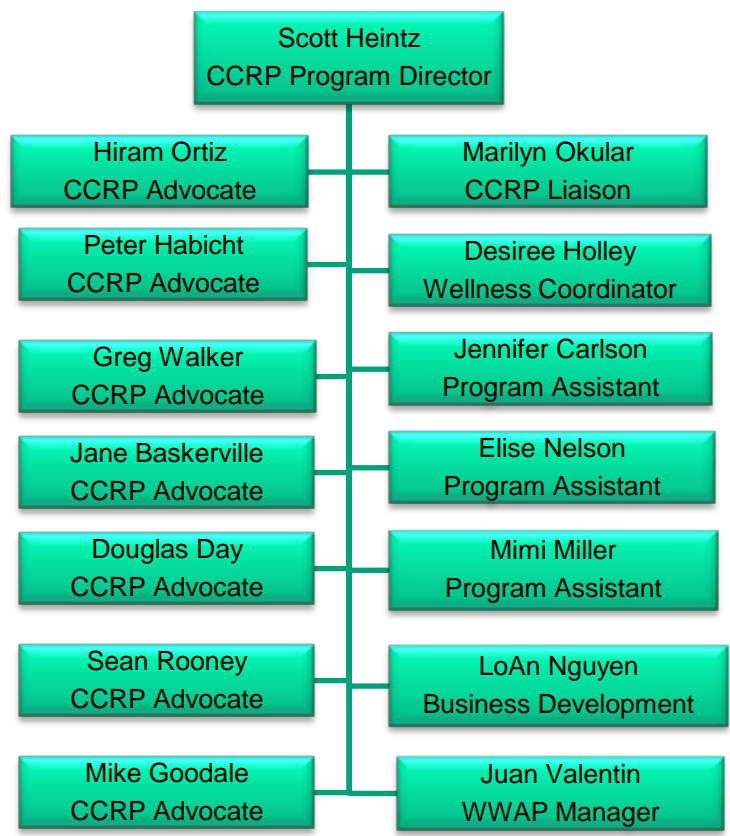


Care Coalition Recovery Program

The overall classification of this briefing is:
UNCLASSIFIED



Organizational Chart





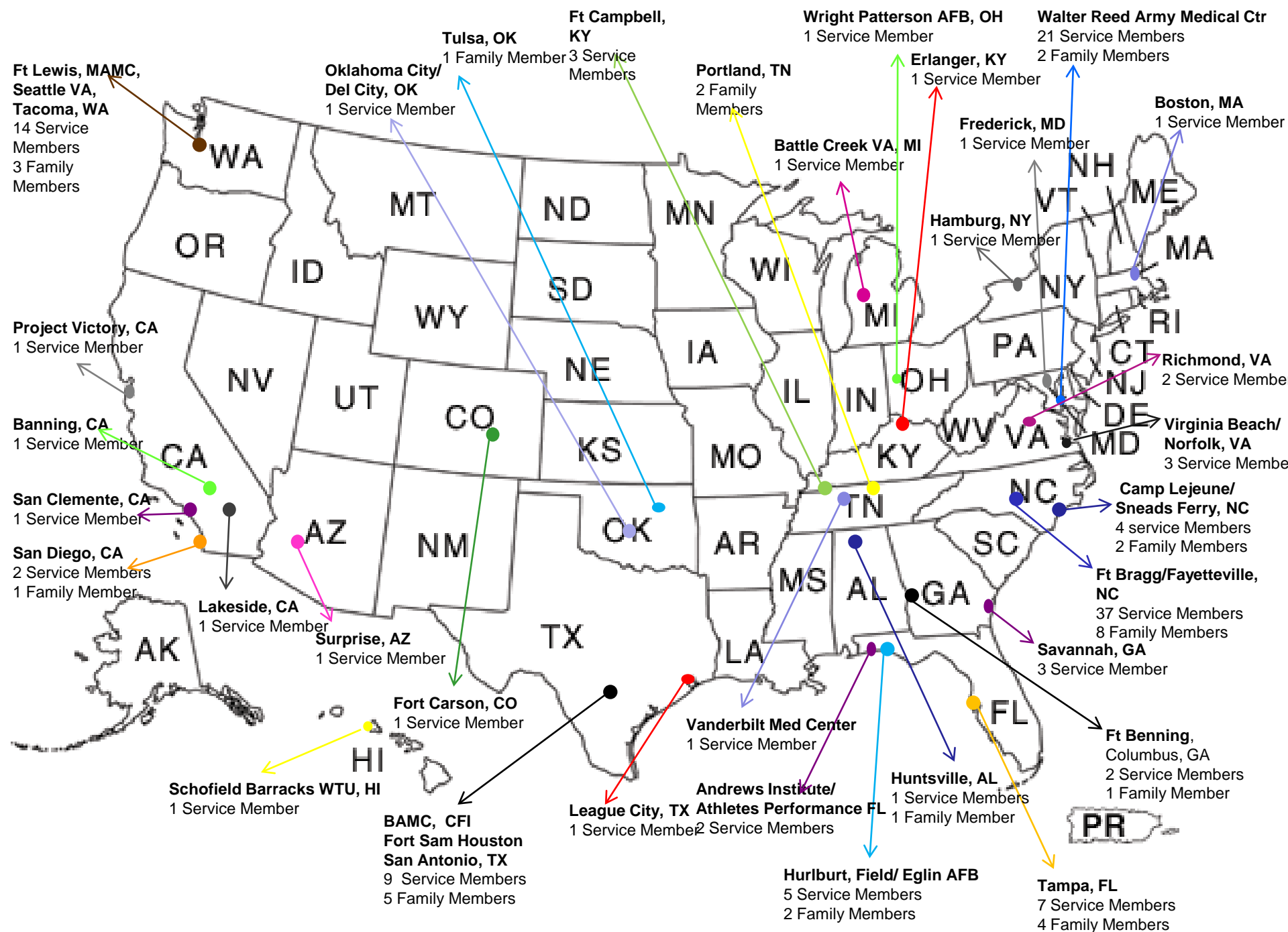
Mission

- **9Line LLC is committed to providing advocacy services and support to Wounded Special Operations Forces Warriors and their families. The 9Line team brings together a variety of military experience from both the Special Operations and medical communities to provide comprehensive support to Wounded Warriors and their families.**



CCRP Enrollment Criteria

- SI or VSI
- Hospitalization for more than two weeks
- Not expected to RTD in less than six months
- Or, as directed by CC





Program Components

■ Mentorship:

- Peer mentors are introduced early on in the recovery process of the Wounded Warrior and their family.
- Provide guidance, feedback, and encouragement.
- Are uniquely qualified to discuss the physical, emotional, and psychological challenges that the newly Wounded Warrior will face in their recovery and rehabilitation – they have truly “been there” and know what challenges the road ahead to recovery presents to both the wounded warrior and the family member.



MENTOR ROAD MAP

WW Enrollment into CCRP

- CC LNO recommends assignment of WW to CCRP
- CC approves
- CCRP advocate assigned
- Advocate initiates detailed action plan
 - * Coord. w/CC LNO to contact WW
 - * Meet w/WW & assess situation
 - * Potential mentor identified
 - * Advocate contacts mentor & coordinates visit

Advocate Notifies CC LNO of Mentor Plans

- Advocate coordinates w/CC LNO to schedule initial mentor/WW meeting
 - * face to face
 - * telephonically, email, txt
- Advocate informs WW of who his/her mentor will be (name, background, injury, status)
- 9Line staff makes travel arrangements

Mentor Meets WW

- Link with LNO and/or CCRP Advocate
- Clear through visitor center (if required)
- Meet w/WW (family members & healthcare team as req)
- Discuss with WW:
 - * Short/long range recovery plan when appropriate
 - * Coordinate w/CCRP Advocate for participation in wellness activities

(Make No Promises!)

Post-meeting Requirements

- Submit all travel-related receipts and mentor AAR to 9Line
- De-brief visit with Advocate
- Coordinate w/Advocate to facilitate WW recovery plan (i.e. participation in wellness activities, community integration, family assistance, employment network resource)
- Advocate coordinates follow-on meetings



Program Components

■ Wellness:

- **Facilitates Wounded Warrior participation in activities that enhance their self-esteem and confidence**
- **Provides everything from adaptive downhill skiing to complimentary care physical therapy such as deep tissue muscle manipulation**
- **Focuses on sustaining the mental well-being of the caregiver spouse or family members**
- **Maintains productive working relationships with specialized treatment facilities, military support organizations, nonprofits, benevolent organizations, adaptive technology and sports equipment vendors**



Program Components

■ Reintegration:

- Ensures smooth transition for Wounded Warriors who are medically retiring and transitioning out of the service
- Develops and delivers a reintegration packet which contains information on the local community
- Works with local business communities to raise awareness of the Wounded Warrior's needs and together develop a reception and support network for them and their families
- Facilitates a smooth transition for those Wounded Warriors who are found fit and choose continuation on active duty (COAD)



Program Components

■ Resource Networks:

- Maintains a comprehensive nation-wide database of employment resources for Wounded Warriors that includes both government and civilian employers as well as support organizations



Program Components

■ Operational Health Advanced Training Program:

- CCRP assists the Wounded Warrior by enrolling them in the Individual Military/Tactical Performance Training Program, at the Andrews Institute in Gulf Breeze, Florida.
- CCRP supports the Wounded Warrior throughout their stay at the Andrews Institute by covering transport/ lodging for the Wounded Warrior, and family members and other support individuals for periodic visits to the training facility.
- CCRP continues to track the Wounded Warrior's progress upon their completion of the Andrews Institute program and their return to duty.



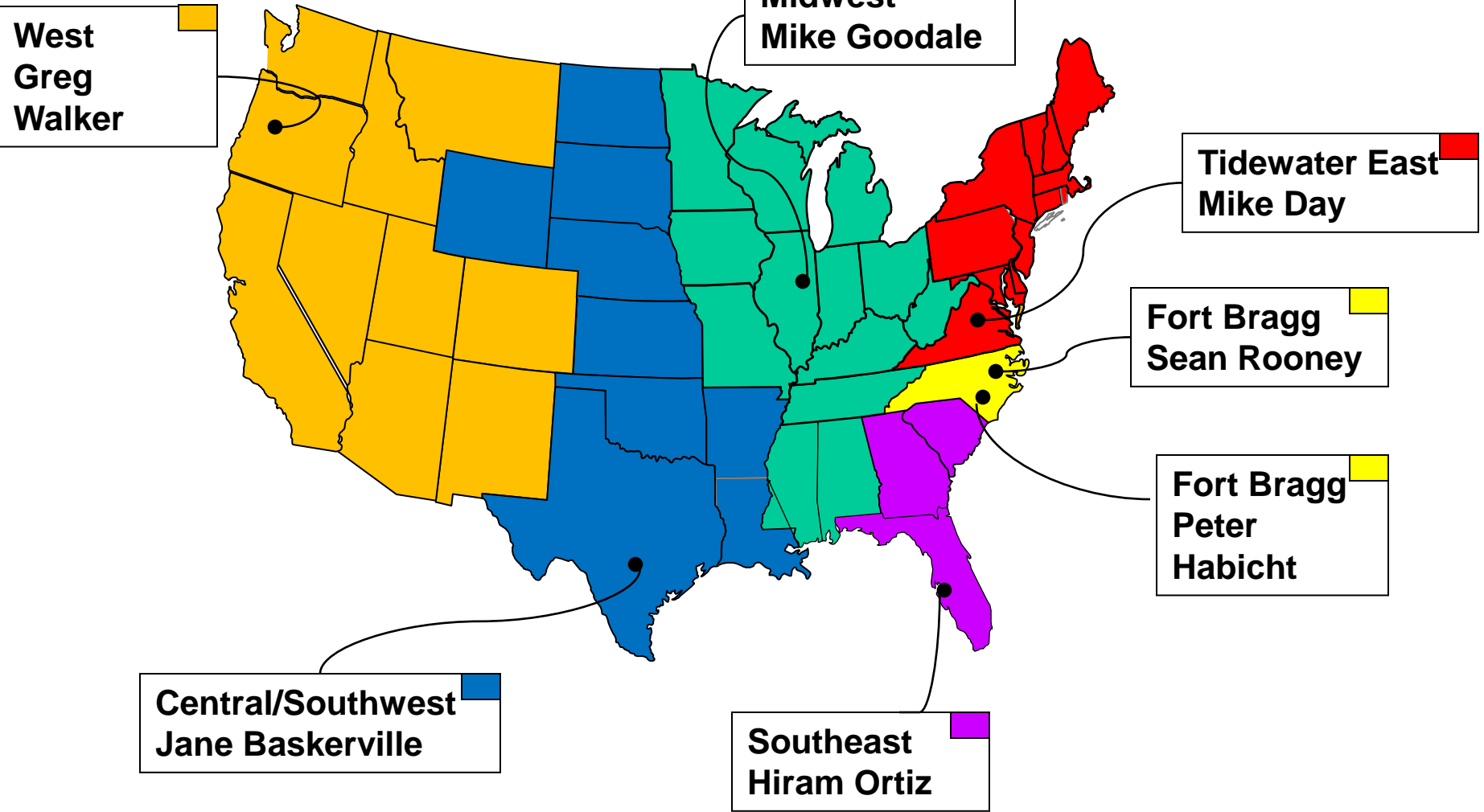
Program Components

■ Advocacy:

- Assists with issues related to health care, benefits, pay, entitlements and medical and physical evaluation boards
- Collaborates with the Department of Defense, Veterans Affairs, and non-governmental organizations to provide maximum benefits for the Wounded Warrior
- Provides the Wounded Warrior information to make informed decisions regarding their military service/civilian career



USSOCOM CCRP Advocate Coverage





Role Delineation

LNO
○ Acute Advocacy
(from admission to MTF)

CCRP Advocate
○ Acute Advocacy
(VSI, SI)
○ Sustained Advocacy through
RTD or transition

CC Advocate
○ Sustained Advocacy
(assigned upon admission
and indefinite support)



Contact Us!

Scott Heintz, CCRP Program Director

813.341.4800, ext. 301

813.810.8605 (Cell)

e-mail: david.heintz.ctr@socom.mil